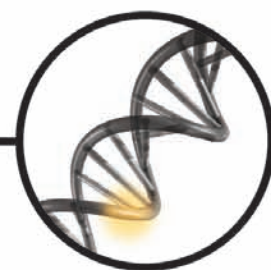


# MAPPING THE CANCER GENOME



**Pinpointing the genes involved in cancer will help chart a new course across the complex landscape of human malignancies**

**By Francis S. Collins and Anna D. Barker**

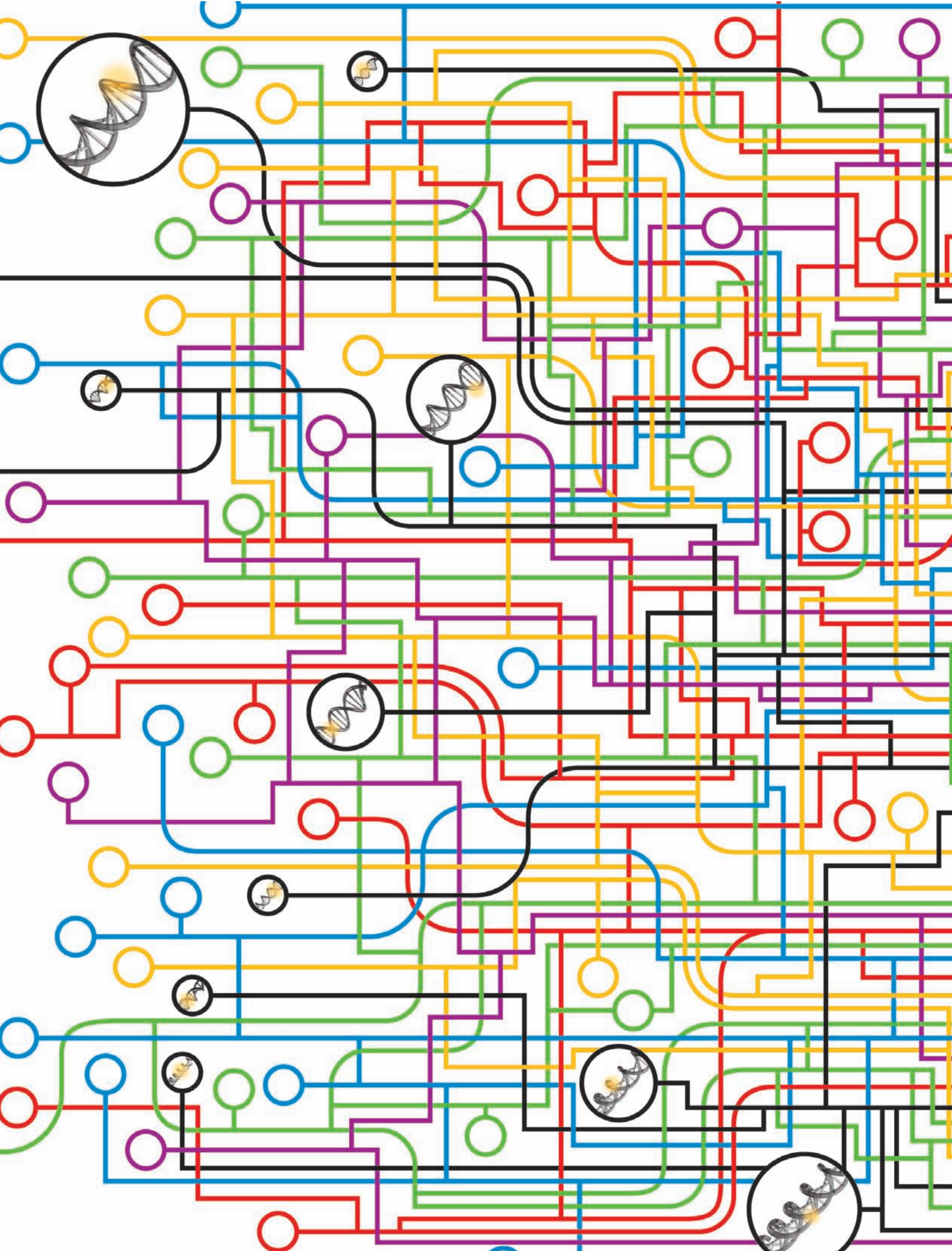
**I**f we wish to learn more about cancer, we must now concentrate on the cellular genome.” Nobel laureate Renato Dulbecco penned those words more than 20 years ago in one of the earliest public calls for what would become the Human Genome Project. “We are at a turning point,” Dulbecco, a pioneering cancer researcher, declared in 1986 in the journal *Science*. Discoveries in preceding years had made clear that much of the deranged behavior of cancer cells stemmed from damage to their genes and alterations in their functioning. “We have two options,” he wrote. “Either try to discover the genes important in malignancy by a piecemeal approach, or ... sequence the whole genome.”

Dulbecco and others in the scientific community grasped that sequencing the human genome, though a monumental achievement itself, would mark just the first step of the quest to fully understand the biology of cancer. With the complete sequence of nucleotide bases in normal human DNA in hand, scientists would then need to classify the wide array of human genes according to their function—which in turn could reveal their roles in cancer. Over the span of two decades Dulbecco’s vision has moved from pipe dream to reality. Less than three

years after the Human Genome Project’s completion, the National Institutes of Health has officially launched the pilot stage of an effort to create a comprehensive catalogue of the genomic changes involved in cancer: The Cancer Genome Atlas (TCGA).

The main reason to pursue this next ambitious venture in large-scale biology with great urgency is cancer’s terrible toll on humankind. Every day more than 1,500 Americans die from cancer—about one person every minute. As the U.S. population ages, this rate is expected to rise significantly in the years ahead unless investigators find ways to accelerate the identification of new vulnerabilities within cancerous cells and develop novel strategies for attacking those targets.

Still, however noble the intent, it takes more than a desire to ease human suffering to justify a research enterprise of this magnitude. When applied to the 50 most common types of cancer, this effort could ultimately prove to be the equivalent of more than 10,000 Human Genome Projects in terms of the sheer volume of DNA to be sequenced. The dream must therefore be matched with an ambitious but realistic assessment of the emerging scientific opportunities for waging a smarter war against cancer.



## MANY PATHWAYS TO MALIGNANCY

Gene malfunctions underlie the ability of cancer cells to escape normal constraints on a cell's behavior. Because genes give rise to proteins that serve as cellular building blocks, signals and regulators of other genes, a mutation that disables one gene, or causes it to be overactive, can have multiple deranging effects on the cell (*below*).

Nevertheless, cells usually need to accrete several cancer-promoting, or oncogenic, mutations in separate genes to acquire the hallmark properties of malignancy (*box at right*). Identifying all the genes whose alteration can produce those traits should one day reveal which mutations are the true drivers of specific types of cancer—even of a specific patient's malignancy—and therefore the most effective ways to intervene in the disease.



EXTERNAL  
GROWTH  
FACTORS

EGFR

SOS

RAS

Gene variants mutated  
in multiple cancers

PI3K

Gene mutated in  
many solid tumors

AKT

CELL  
SUICIDE

RAF

*B-RAF* gene mutated in  
most melanomas

MEK

ERK

RSK

CELL  
GROWTH

### ▲ COMPLEX CIRCUITRY

The extraordinarily complex molecular interactions in a human cell can be viewed as a network of parallel and intersecting pathways. A simplified depiction (*right*) of just one such pathway that promotes cell proliferation begins with a family of epidermal growth factor receptors (EGFR) in the cell membrane. Their stimulation by growth factors outside the cell transmits signals to additional proteins and genes, ultimately prompting the cell to "grow" by dividing.

### ▲ ONCOGENIC MUTATIONS

In a significant portion of lung and breast tumors, members of the *EGFR* gene family are mutated or duplicated, which boosts the number or function of the receptors they encode, overstimulating this growth pathway. Damage to downstream genes can have similar results. Changes in the *B-RAF* gene, seen in some 70 percent of melanomas, also promote hyperactive cell proliferation. Versions of the *RAS* gene are mutated in many cancer types, which can affect cell growth as well as intersecting pathways—for example, interfering with a suicide program that normally destroys damaged cells.

## A Disease of Genes

THE IDEA THAT ALTERATIONS to the cellular genome lie at the heart of all forms of cancer is not new. Since the first identification in 1981 of a cancer-promoting version of a human gene, known as an oncogene, scientists have increasingly come to understand that cancer is caused primarily by mutations in specific genes. The damage can be incurred through exposure to toxins or radiation, by faulty DNA repair processes or by errors that occur when DNA is copied prior to cell division. In relatively rare cases, a cancer-predisposing mutation is carried within a gene variant inherited from one's ancestors.

Whatever their origin, these mutations disrupt biological

pathways in ways that result in the uncontrolled cell replication, or growth, that is characteristic of cancer as well as other hallmarks of malignancy, such as the ability to invade neighboring tissues and to spread to sites throughout the body. Some mutations may disable genes that normally protect against abnormal cell behavior, whereas others increase the activity of disruptive genes. Most cells must acquire at least several of these alterations before they become transformed into cancer cells—a process that can take years.

Over the past two decades many individual research groups have used groundbreaking molecular biology techniques to search for mutations in genes that are likely candidates for wreaking havoc on normal patterns of cell growth and behavior. This approach has identified about 350 cancer-related genes and yielded many significant insights into this diabolical disease. A database of these changes, called the catalogue of somatic mutations in cancer, or COSMIC, is maintained by Michael Stratton's group at the Wellcome Trust Sanger Institute in Cambridge, England. But no one imagines that it is the complete list.

So does it make sense to continue exploring the genomic basis of cancer at cottage-industry scale when we now possess the means to vastly increase the scope and speed of discovery? In recent years a number of ideas, tools and technologies have emerged and, more important, converged in a manner that

## Overview/*Cancer Connections*

- Changes in the structure or activity of genes underlie the malignant behavior of cancer cells.
- Identification of genes involved in certain cancers is already advancing diagnosis and treatment.
- The Cancer Genome Atlas is a monumental initiative to eventually identify all the genetic alterations in different forms of cancer so that gene changes driving the disease can be targeted directly.

LUCY READING-ICKKANDA; ACKNOWLEDGMENT: SPECIAL THANKS TO JEFFREY SETTLEMAN OF THE CENTER FOR CANCER RESEARCH AT MASSACHUSETTS GENERAL HOSPITAL AND DAPHNE W. BELL OF THE NHGRI CANCER GENETICS BRANCH FOR THEIR ADVICE ON THE PATHWAY ILLUSTRATION



## Hallmarks of Cancer

The six abnormal capabilities listed below together give tumors their lethal power to overrun their native tissue and spread through the body.

### Self-sufficiency in growth signaling

Cancer cells amplify external growth cues or generate their own.

### Insensitivity to antigrowth signals

Cancer cells become deaf to quiescence cues from surrounding tissue.

### Evasion of cell suicide

Mechanisms that should trigger or carry out a self-destruct program in damaged cells are disabled or overridden.

### Limitless replicative potential

Cancer cells evade intrinsic limits on the number of times a normal cell can divide.

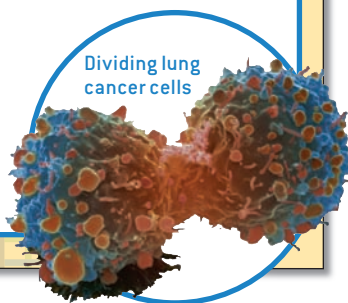
### Sustained blood vessel growth

Tumors emit signals promoting the development of new blood vessels to deliver oxygen and nutrients.

### Invasiveness and motility

Cancer cells defy multiple signals and forces that hold a cell in place and prevent it from traveling to—and thriving in—other tissues.

*Adapted from "The Hallmarks of Cancer," by Douglas Hanahan and Robert A. Weinberg, in Cell, Vol. 100, January 7, 2000.*



has convinced many leading minds in the cancer and molecular biology communities that it is time for a systematic, collaborative and comprehensive exploration of the genomics of cancer.

The Human Genome Project laid a solid foundation for TCGA by creating a standardized reference sequence of the three billion DNA base pairs in the genome of normal human tissues. Now another initiative is needed to compare the DNA sequences and other physical characteristics of the genomes of normal cells with those of cancerous cells, to identify the major genetic changes that drive the hallmark features of cancer [see box above]. The importance of international partnerships in large-scale biology to pool resources and speed scientific discovery was also demonstrated by the Human Genome Project, and TCGA is exploring similar collaborations.

Finally, the Human Genome Project spurred significant advances in the technologies used to sequence and analyze genomes. At the start of that project in 1990, for example, the cost of DNA sequencing was more than \$10 per “finished” nucleotide base. Today the cost is less than a penny per base and is expected to drop still further with the emergence of innovative sequencing methods [see “Genomes for All,” by George M. Church; SCIENTIFIC AMERICAN, January 2006]. Because of these and other technological developments, the large-scale approach embodied in TCGA—unthinkable even

a few years ago—has emerged as perhaps the most efficient and cost-effective way to identify the wide array of genomic factors involved in cancer.

## Proofs of Concept

PILES OF DATA are, of course, not worth much without evidence that comprehensive knowledge of cancer’s molecular origins can actually make a difference in the care of people. Several recent developments have provided proofs of concept that identifying specific genetic changes in cancer cells can indeed point to better ways to diagnose, treat and prevent the disease. They offer encouraging glimpses of what is to come and also demonstrate why the steps toward those rewards are complex, time-consuming and expensive.

In 2001, when the Wellcome Trust Sanger Institute began its own effort to use genomic technologies to explore cancer, the project’s immediate goal was to optimize robotics and information management systems in test runs that involved sequencing 20 genes in 378 cancer samples. But the group hit pay dirt a year later when they found that a gene called *B-RAF* was mutated in about 70 percent of the malignant melanoma cases they examined. A variety of researchers swiftly set their sights on this potential new therapeutic target in the most deadly form of skin cancer. They tested multiple approaches—from classic chemical drugs to small interfering ribonucleic acids—in cell lines and in mice, to see if these interventions could block or reduce the activity of *B-RAF* or inhibit a protein called MEK that is overproduced as a result of *B-RAF* mutations. Just five years later the most promising of these therapies are being tested in clinical trials.

Other research groups have already zeroed in on genetic mutations linked to certain types of breast cancer, colon cancer, leukemia, lymphoma and additional cancers to develop molecular diagnostics, as well as prognostic tests that can point to an agent in the current arsenal of chemotherapies to which a particular patient is most likely to respond. Cancer genomics has also helped to directly shape the development and use of some of the newest treatments.

The drug Gleevec, for example, was designed to inhibit an enzyme produced by a mutant fused version of two genes, called *BCR-ABL*, that causes chronic myelogenous leukemia. Gleevec is proving dramatically effective against that disease and showing value in the treatment of more genetically complex malignancies, such as gastrointestinal stromal tumor and several other relatively rare cancers that involve similar

## THE AUTHORS

FRANCIS S. COLLINS and ANNA D. BARKER are leaders of The Cancer Genome Atlas initiative in their positions as, respectively, director of the National Human Genome Research Institute and deputy director for Advanced Technologies and Strategic Partnerships of the National Cancer Institute. Collins led the Human Genome Project to its completion of the human DNA sequence, and Barker has headed drug development and biotechnology research efforts in the public and private sectors, with a particular focus on fighting cancer.

# Genes and Cancer

A connection between genetic abnormalities and the aberrant features of cancer cells was first suggested more than 100 years ago by German biologist Theodor Boveri and others. But over the past few decades evidence that gene alterations directly cause the deranged behavior of cancer cells began accumulating. Calls arose by 1986 to sequence the normal human genome to study malignant gene changes comprehensively. The Human Genome Project was completed in 2003. The Cancer Genome Atlas project will start cataloguing the gene mutations found in three types of human cancer this year.

## 1890–1914

Studies of abnormal chromosome distribution during cell division suggest a role in malignancy.

Theodor Boveri ▶

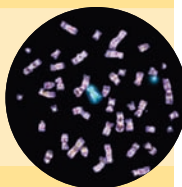


## 1950s–1960s

Multiple discoveries reveal that tumor viruses can cause cancer by injecting their genes into cells.

## 1960

First genetic defect associated with a specific cancer—an abnormality known as the Philadelphia chromosome—is discovered in chronic myelogenous leukemia (CML) cells.



## 1976

Scientists discover that *src*, a nonviral gene found in animal cells, can cause cancer.

## 1979

*P53*, later found to be the most frequently mutated gene in human cancer, is discovered.

## 1981

*H-RAS* is the first human oncogene (a gene whose alteration is cancer-promoting) to be discovered.

## 1983

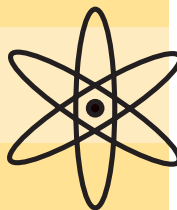
Altered methylation of DNA, suspected to affect gene activation, found in cancer cells.

## 1986

Renato Dulbecco, writing in *Science*, calls for sequencing the human genome to advance cancer research.

## 1986

U.S. Department of Energy considers sequencing the human genome to further study of radiation effects.



## 1986

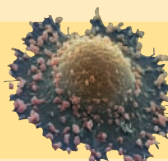
First tumor suppressor gene, *RB1*, is identified.

## 1987

Fused gene *BCR-ABL* in the Philadelphia chromosome is found to cause CML.

## 1990

Model of multistep tumor genesis clarifies the role of accumulated gene changes in cellular transformation to malignancy.



## 1990

Human Genome Project begins.



enzymes. Herceptin, an agent that targets a cellular signal-receiving protein called *HER2*, is successful against breast cancers with an abnormal multiplication of the *HER2* gene that causes overproduction of the receptor protein.

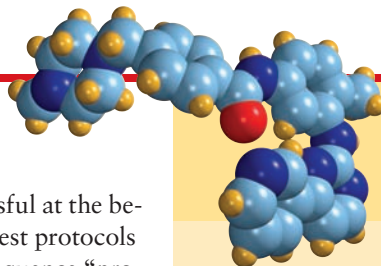
Strategies for selecting treatments based on specific gene mutations in a patient's cancer are also being tested in studies of the drugs Iressa and Tarceva for lung cancer, as well as Avastin for lung, colon and other cancers. The performance of these new gene-based diagnostics, prognostics and therapeutics is certainly good news, although the list of such interventions remains far shorter than it would be if researchers in academia and the private sector had ready access to the entire atlas of genomic changes that occur in cancer.

A recent study led by investigators at Johns Hopkins University illustrates both the power of large-scale genomics applied to the discovery of cancer genes and the tremendous undertaking a comprehensive cancer genome atlas will be. The group sequenced about 13,000 genes in tumor tissues taken from 11 colorectal cancer patients and 11 breast cancer patients and reported finding potentially significant mutations in nearly 200 different genes. Interestingly, only about a dozen genes had previously been linked to these two types of cancer, and most scientists had generally expected to find just a few more.

Among the major challenges encountered by researchers sequencing cancer cell genomes is the difficulty of distinguishing meaningless mutations in the tumor samples from those that are cancer-related. Somewhat surprisingly, early sequencing studies have also found very little overlap among the genetic mutations present in different types of cancer and even substantial variation in the pattern of genetic mutations among tumor samples from patients with the same type of cancer. Such findings underscore the idea that many different possible combinations of mutations can transform a normal cell into a cancer cell. Therefore, even among patients with cancers of the same body organ or tissue, the genetic profile of each individual's tumor can differ greatly.

To grasp the full scope of what TCGA hopes to achieve, one must consider the complexities identified in such early efforts and imagine extending the work to more than 100 types of cancer. It is enough to give even veterans of the Human Genome Project and seasoned cancer biologists pause. Yet TCGA participants and other scientific pioneers from around the world are forging ahead, because we are convinced that amid the intricacies of the cancer genome may lie the greatest promise for saving the lives of patients.

Although researchers will probably take many years to complete a comprehensive catalogue of all the genomic mutations that cause normal cells to become malignant, findings with the potential to revolutionize cancer treatment are likely to appear well before this compendium is finished, as the proofs of concept have shown. As each new type of cancer is studied and added to TCGA, investigators will gain another rich new set of genomic targets and profiles that can be used to develop more tailored therapies.



## Compiling a Colossal Atlas

A PHASED-IN STRATEGY that proved successful at the beginning of the Human Genome Project was to test protocols and technology before scaling up to full DNA sequence “production.” Similarly, TCGA is beginning with a pilot project to develop and test the scientific framework needed to ultimately map all the genomic abnormalities involved in cancer.

In 2006 the National Cancer Institute and National Human Genome Research Institute selected the scientific teams and facilities that will participate in this pilot project, along with the cancer types they will begin examining. Over the next three years these two institutes will devote \$100 million to compiling an atlas of genomic changes in three tumor types: glioblastomas of the brain, lung cancer and ovarian cancer. These particular cancers were chosen for several reasons, including their value in gauging the feasibility of scaling up this project to a much larger number of cancer types. Indeed, only if this pilot phase achieves its goals will the NIH move forward with a full-fledged project to develop a complete cancer atlas.

The three malignancies that we selected for the pilot collectively account for more than 210,000 cancer cases in the U.S. every year and caused an estimated 191,000 deaths in this country in 2006 alone. Moreover, tumor specimen collections meeting the project’s strict scientific, technical and ethical requirements exist for these cancer types. Last September our institutes announced the selection of three biorepositories to provide such specimens, along with new tumor samples as needed, and normal tissue from the same patients for comparison. Those facilities will deliver materials to a central Biospecimen Core Resource, one of four major structural components in TCGA’s pilot project.

Cancer Genome Characterization Centers, Genome Sequencing Centers and a Data Coordinating Center constitute the project’s other three main elements [see illustration at right], and all these groups will collaborate and exchange data openly. Specifically, the seven Cancer Genome Characterization Centers will use a variety of technologies to examine the activity levels of genes within tumor samples and to uncover and catalogue so-called large-scale genomic changes that contribute to the development and progression of cancer. Such alterations include chromosome rearrangements, changes in gene copy numbers and epigenetic changes, which are chemical modifications of the DNA strand that can turn gene activity on or off without actually altering the DNA sequence.

Genes and other chromosomal areas of interest identified by the Cancer Genome Characterization Centers will become targets for sequencing by the three Genome Sequencing Centers. In addition, families of genes suspected to be important in cancer, such as those encoding enzymes involved in cell-cycle control known as tyrosine kinases and phosphatases, will be sequenced to identify genetic mutations or other small-scale changes in their DNA code. At present, we estimate that some 2,000 genes—in each of perhaps 1,500 tumor samples—will be sequenced during this pilot project. The exact numbers will, of course, depend on the samples obtained and what is discovered

◀ Gleevec model

1993

Preclinical testing starts on drug that would become Gleevec, the first therapy developed to target a known gene-based cause of a cancer.



1999

Gene-activity profiles are first shown to distinguish between cancer types and to predict chemotherapy response.

2001

Gleevec earns FDA approval.

2002

Wellcome Trust Sanger Institute tumor genome survey discovers a mutation in *B-RAF* gene common to 70 percent of melanomas.

2003

Human Genome Project is completed.



2005

The Cancer Genome Atlas (TCGA) pilot project is announced by the National Institutes of Health.

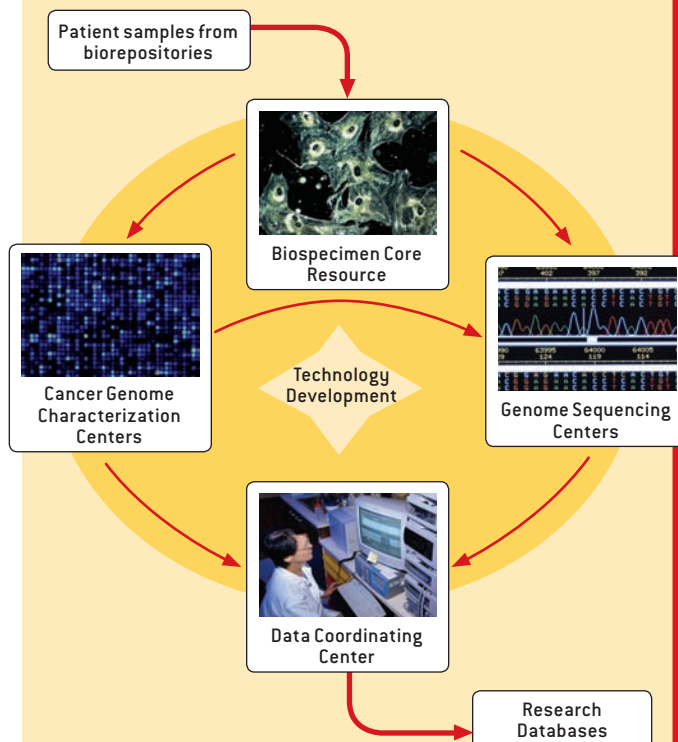
2006

TCGA names pilot project participants and three cancer types for sequencing and genetic analysis.

2007–2010

TCGA will collect and analyze tumor samples obtained from designated biorepository institutions treating patients with cancer. The project’s four primary components—a Biospecimen Core Resource, seven Cancer Genome Characterization Centers, three Genome Sequencing Centers and a Data Coordinating Center—will cooperate to test methods and technologies and to generate and manage data that will be made available to the wider research community.

### How Will It Work?





about them by the Cancer Genome Characterization Centers.

Both the sequencing and genome characterization groups, many of which were participants in the Human Genome Project, can expect to encounter a far greater level of complexity than that in the DNA of normal cells. Once cells become cancerous, they are prone to an even greater rate of mutation as their self-control and repair mechanisms fail. The genomic makeup of individual cells can therefore vary dramatically within a single tumor, and the integrated teams will need to develop robust methods for efficiently distinguishing the “signal” of a potentially biologically significant mutation from

the “noise” of the high background rate of mutations seen in many tumors. Furthermore, tumors almost always harbor some nonmalignant cells, which can dilute the sample. If the tumor DNA to be sequenced is too heterogeneous, some important mutations may be missed.

Following the lead of the Human Genome Project and other recent medical genomics efforts, all these data will be made swiftly and freely available to the worldwide research community. To further enhance its usefulness to both basic and clinical researchers and, ultimately, health care professionals, TCGA will link its sequence data and genome analyses with

## From Genome to Cancer—Why the Time Is Right

By Renato Dulbecco

When in 1986 I suggested a new project directed at identifying all human genes, one of my overriding goals was to find those genes involved in cancer development—a feat I hoped would lead to new tools for cancer research and, ultimately, to new therapies. That original human genome project has now been carried out and has demonstrated its usefulness for the discovery of genes involved in many diseases, including cancer. Moreover, the genome sequencing effort has been extended to other organisms—from bacteria to chimpanzees—and is showing the unity of life by revealing how many genes distant species share in common.

In the course of this work, new technologies have also provided a much more detailed understanding of the complicated processes by which genes give rise to a variety of functional molecules. An important outcome of this research is the realization that genes do not act alone but are participants in extensive networks of activity within cells. Any change in the functioning of one gene can therefore be accompanied by changes in the workings of multiple genes and proteins involved in the cells’ self-maintenance.

The complexity of this system in normal cells is evident in what we already know about cancer—that it results from the stepwise loss of such cellular self-control, which becomes more and more complete as the disease progresses. That progression is caused only in part by physical alterations, or mutations, in specific genes; mostly it is the result of consequent changes in the activity of many other genes involved in cell regulation. Single genes may therefore be responsible in the initiation of cancer and so potential therapeutic targets. To reach the more advanced stages of these cancers [such as the acute phase

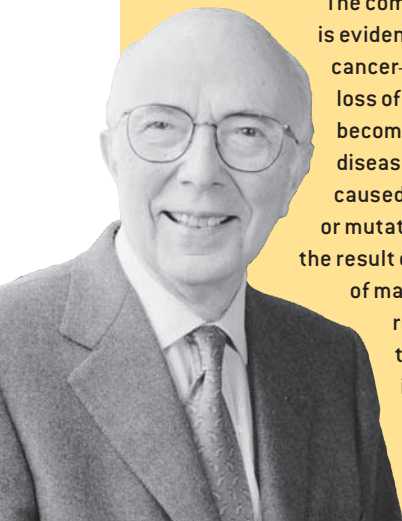
of myeloid leukemia or the metastatic phase of other cancers], however, the participation of many other genes is required. Most of them are still unknown.

An exception is the recently observed phenomenon of oncogene addiction in certain tumor cells: despite the presence of numerous mutations to the cellular genome, turning off the activity of one so-called oncogene causes the cells to commit suicide via a mechanism known as apoptosis. But how generally this phenomenon occurs is also unknown. To approach these questions, it will be necessary to have a complete catalogue of the structural and functional alterations of genes and other cellular components that cause the loss of regulation in cancer cells. This process, in turn, will require a complete determination of their connections into networks by computational means—a task for the future.

On the way to this goal, however, many other unanswered questions can be explored by the research community. A possible role for stem cells in cancer, for example, is supported by similarities in the behavior of stem cells and cancer cells: both have an unlimited ability to divide; both are very sensitive to the cellular environment, or niche, in which they grow; and many of the genes known to be active in stem cells are also activated in cancer cells.

The advent of genomics has provided welcome insight into the mechanisms by which normal cells become cancerous, but our picture is still incomplete. The time has come to obtain a truly comprehensive catalogue of the genes involved in cancer, bringing to bear all the power of the new tools of genomics and molecular biology to the problem. The Cancer Genome Atlas project aims to do just that.

*Renato Dulbecco is president emeritus of the Salk Institute for Biological Studies and co-recipient of the 1975 Nobel Prize in Physiology or Medicine for discoveries related to the interaction of tumor viruses and the genetic material of the cell.*



information about observable characteristics of the original tumors and the clinical outcomes of the sample donors. Developing the bioinformatic tools to gather, integrate and analyze those massive amounts of data, while safeguarding the confidentiality of patient information, is therefore another hurdle that must be cleared to turn our vision into reality.

## Uncharted Territory

THE ROAD AHEAD is fraught with scientific, technological and policy challenges—some of which are known and others as yet unknown. Among the uncertainties to be resolved: Will new sequencing technologies deliver on their early promise in time to make this effort economically feasible? How quickly can we improve and expand our toolbox for systematically detecting epigenetic changes and other large-scale genomic alterations involved in cancer, especially those associated with metastasis? How can we harness the power of computational biology to create data portals that prove useful to basic biologists, clinical researchers and, eventually, health care professionals on the front lines? How can we balance intellectual-property rights in a way that promotes both basic research and the development of therapies? When will Congress finally pass genetic nondiscrimination legislation so that knowledge gained through TCGA will have the maximum positive influence on Americans' health? The list goes on.

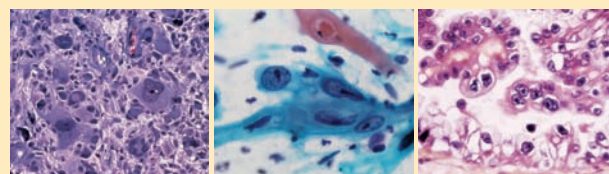
To avoid raising false expectations, we also must be clear about the questions this project will not attempt to answer. Although it will serve as a resource for a broad range of biological exploration, TCGA is only a foundation for the future of cancer research and certainly not the entire house. And we face the sobering issue of time—something that is in short supply for many cancer patients and their families. As we survey the considerable empty spaces that exist in our current map of genomic knowledge about cancer, the prospect of filling those gaps is both exhilarating and daunting. Scientists and the public need to know up front that this unprecedented foray into molecular cartography is going to take years of hard work and creative problem solving by thousands of researchers from many different disciplines.

Where all this work will lead can only be dimly glimpsed today. In this sense, our position is similar to that of the early 19th-century explorers Meriwether Lewis and William Clark. As they ventured up the Missouri River into the largely uncharted Northwest Territory in 1804, their orders from President Thomas Jefferson were to “take observations of latitude and longitude at all remarkable points.... Your observations are to be taken with great pains and accuracy; to be entered distinctly and intelligibly for others, as well as yourself.”

Although Lewis and Clark did not find the much-longed-for water route across the continent, their detailed maps proved valuable to their fledgling nation in myriad ways that Jefferson could never have imagined. For the sake of all those whose lives have and will be touched by cancer, we can only hope our 21st-century expedition into cancer biology exceeds even Renato Dulbecco's grandest dreams. SA

## Targeting Gene Changes in Cancer

TCGA pilot project teams will examine the DNA of some 1,500 tumor samples from patients with cancers of the lung, ovaries or brain (glioblastoma), looking for genetic changes. Approximately 2,000 suspect genes in each sample will be sequenced to identify specific mutations. The list of target genes will be tailored to each cancer type and largely determined by what the Cancer Genome Characterization Centers find in the samples, although candidates will also be drawn from categories of genes already associated with cancer.



From left to right: Glioblastoma, lung cancer, ovarian cancer

GENE CATEGORIES	EXAMPLES
Genes identified by TCGA Cancer Genome Characterization Centers as having aberrant structure or activity in a significant number of tumor samples	In some brain tumor cell lines, a gene encoding the intracellular protein NF-KAPPA B is much more active than in normal brain tissue
Well-known oncogenes (genes whose overactivity or alteration is cancer-promoting)	<ul style="list-style-type: none"> <li>• Growth factor receptor genes: <i>HER2</i> (breast and lung cancers), <i>EGFR</i> (lung and colon cancers)</li> <li>• Signaling protein genes: <i>BCR-ABL</i> (chronic myelogenous leukemia), <i>RAS</i> (many cancers), <i>B-RAF</i> (skin cancers)</li> <li>• Regulators of cell death: <i>BCL-2</i> (lymphoma)</li> </ul>
Well-known tumor suppressors (genes that protect cells from malignant transformation, unless disabled by mutation)	<ul style="list-style-type: none"> <li>• Controllers of cell division: <i>RB1</i> (retinoblastoma)</li> <li>• DNA repairers: <i>HNPCC</i> (colon cancer, endometrial cancer)</li> <li>• Promoters of programmed cell suicide: <i>P53</i> (lung, colon, breast and brain tumors)</li> </ul>
Genes related to known oncogenes and tumor suppressor genes by similarity or pathway membership	The oncogenes <i>HER2</i> and <i>EGFR</i> are part of the epidermal growth factor receptor signaling pathway, which contains at least half a dozen other genes suspected of playing key roles in cancer development and progression

### MORE TO EXPLORE

**The New Era in Cancer Research.** Harold Varmus in *Science*, Vol. 312, pages 1162–1165; May 26, 2006.

**The Consensus Coding Sequences of Human Breast and Colorectal Cancers.** Tobias Sjöblom et al. in *Science*, Vol. 314, pages 268–274; October 13, 2006. [Published online September 7, 2006.]

The Cancer Genome Atlas: <http://cancergenome.nih.gov>